

User Service Workshop
Wednesday July 31, 2013

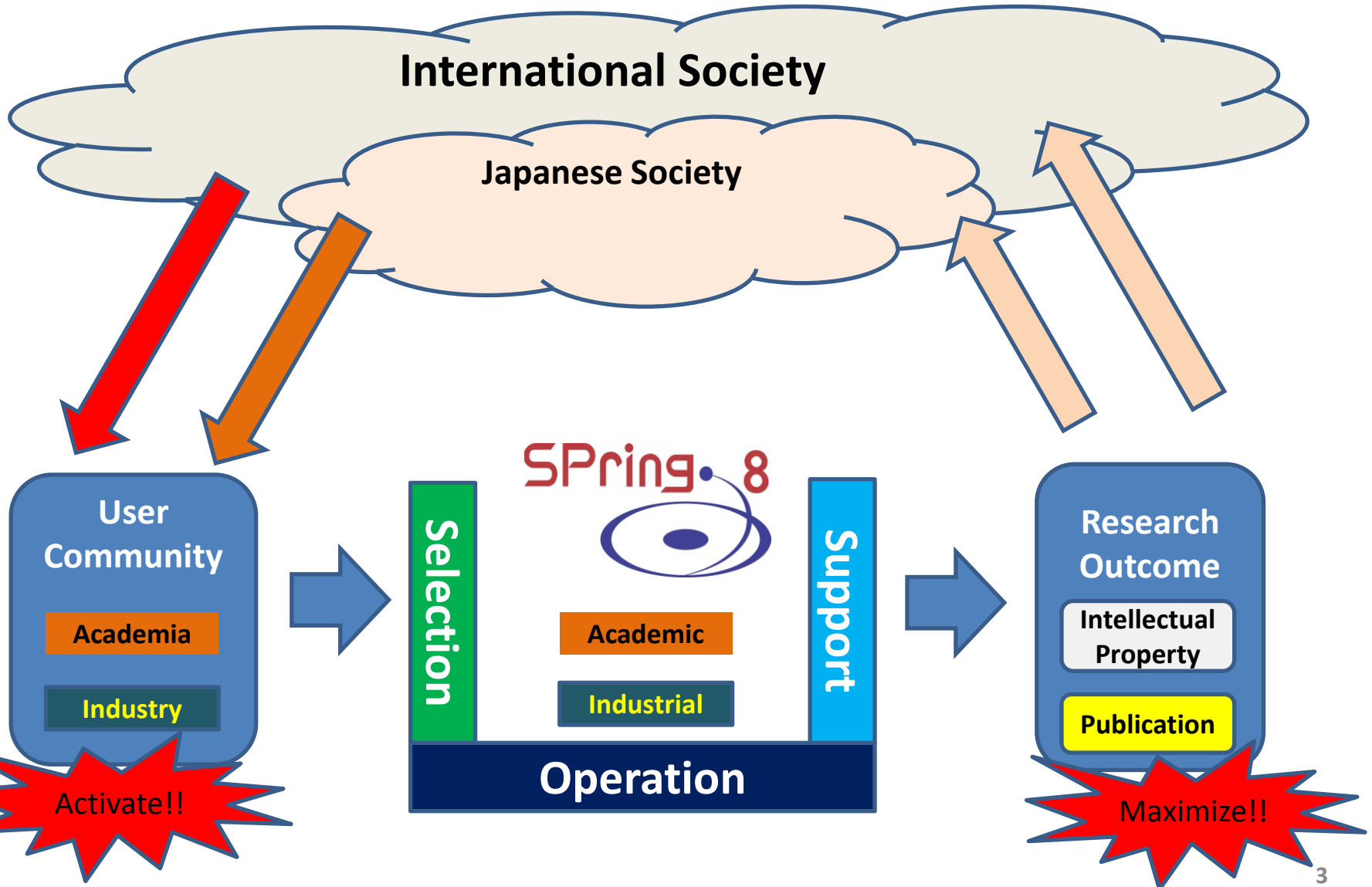
Session: User Meetings, User Organization, User Workshop, *Industrial Issues*

Spring-8 User Issues in Japan

Masayo SUZUKI

Japan Synchrotron Radiation Research Institute (JASRI)

Where are Subjects & Issues ?



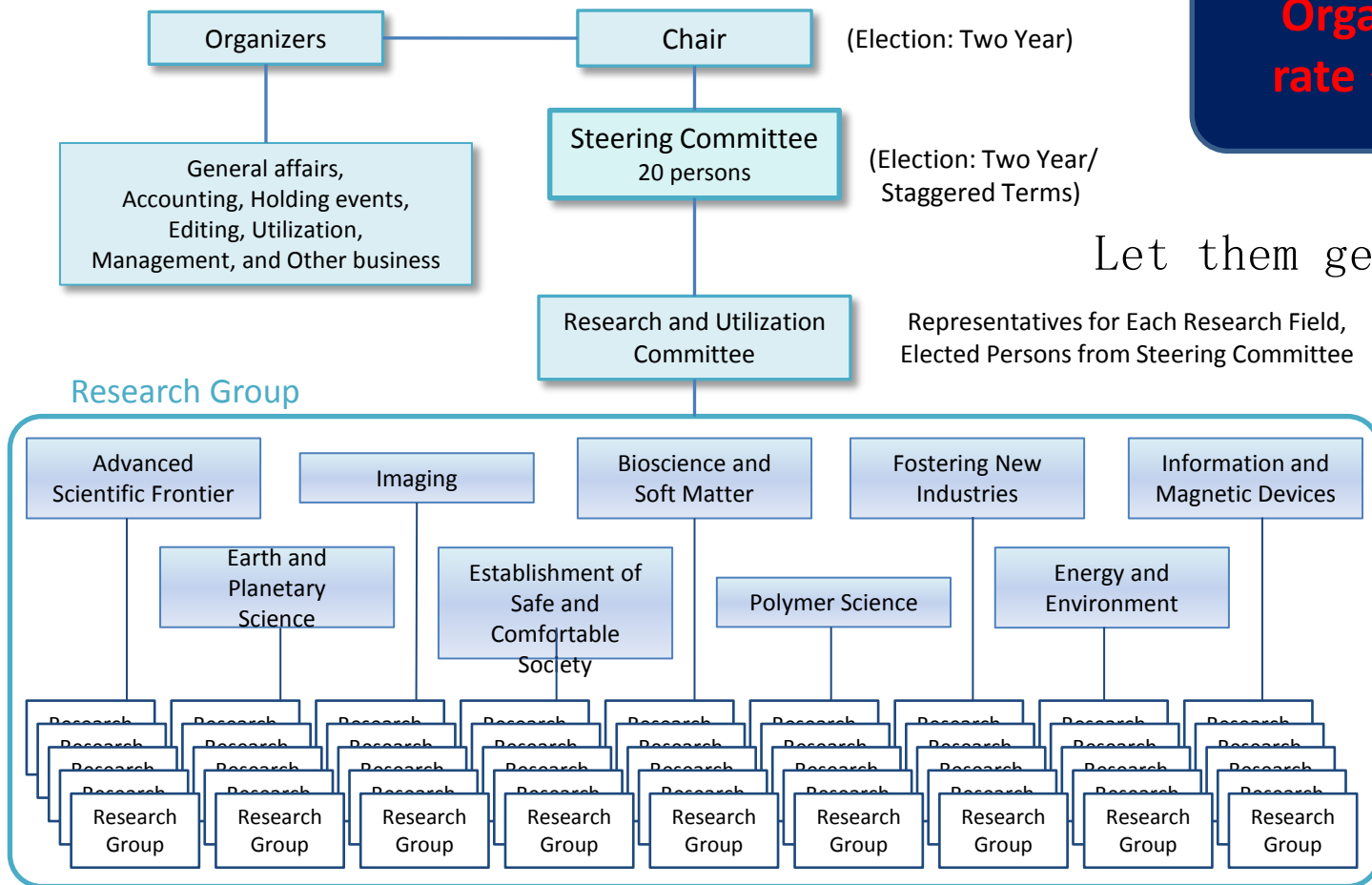
User Community



SPring-8 Users Society

Organization rate ~ 10%

Let them get together.



Spring-8 Uers Community : SPRUC



The SPring-8 Users Society established in 1993 was disbanded and absorbed into a new user organization, the SPring-8 Users Community (SPRUC) at 2012.

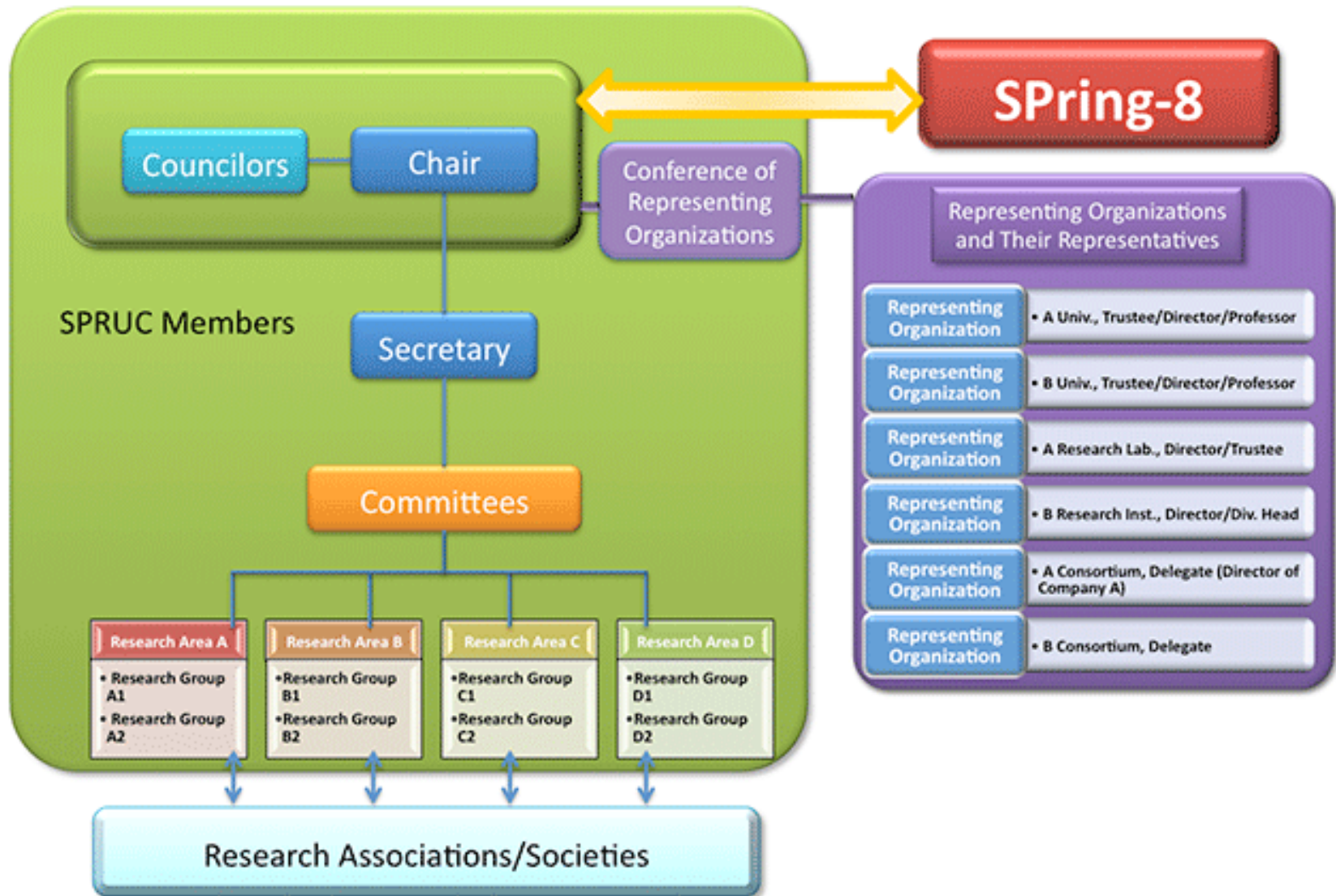
< Purpose >

The SPRUC is a user organization formed by SPring-8 users. In close cooperation with the Registered Institution for Facilities Use Promotion (JASRI) and the facility owner (RIKEN), the SPRUC aims to facilitate the sophistication and optimization of the facility use and the development of science and technology by building bridges between the SPring-8 and academia/industry. Interaction between members is expected to ensure the development and expansion of SR science and quantum beam science.

< Organization >

With a view to achieving the above goal, all users of SPring-8 shall automatically become members of the SPRUC upon completion of SPring-8 user registration.

SPRUC Organization Chart



URL <http://www.spring8.or.jp/ext/en/spruc/index.html>

Interim Review of SPring-8 conducted by MEXT (2)

Some Viewpoints

1. Facility Upgrade
2. Beamline Upgrade
3. User Support
4. User Expansion in Industrial Applications
5. Human Resource Cultivation
6. Feed-back of Scientific Results to Society

Thank you for your attention.

